



Education pathways for your child

Sec 3 & 4 NA

FAIRFIELD
METHODIST
SCHOOL
(SEC)

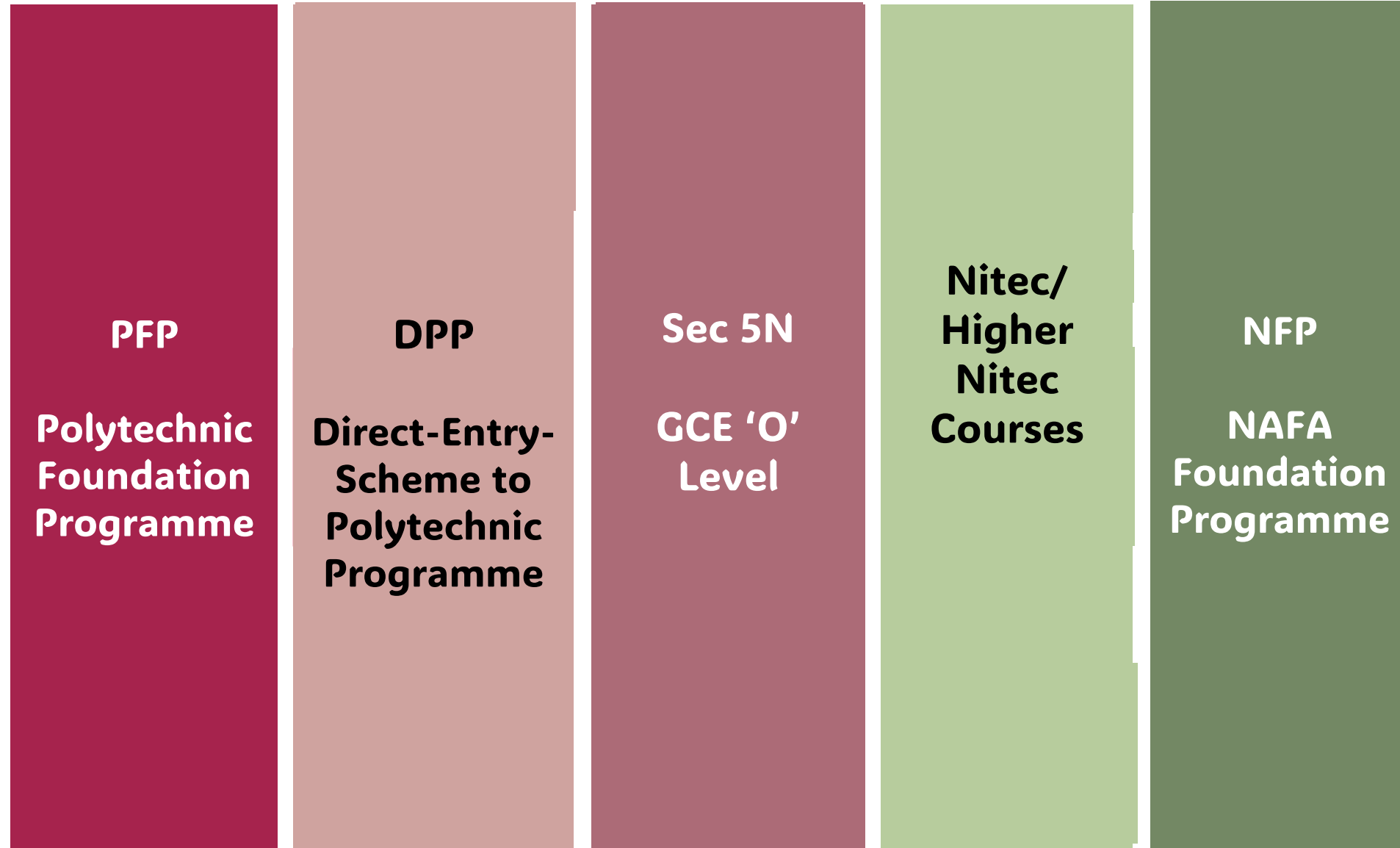


What we will cover

Education Pathways for NA Students

- Poly Foundation Programme (PFP)
- Direct-Entry-Scheme to Polytechnic Programme (DPP)
- Sec 5 (O levels)
- Nitec
- NAFA Foundation Programme (NFP)

Education Pathways for N(A) students



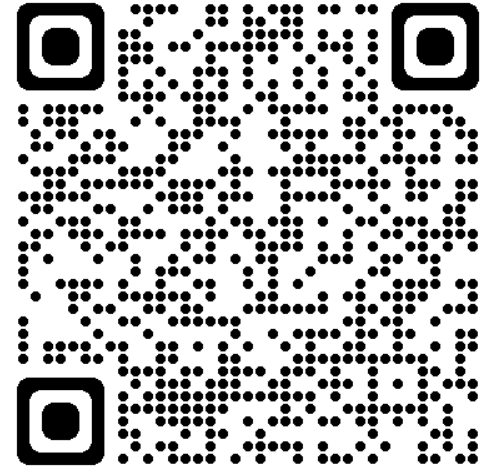
Education Pathways for N(A) students



What is Polytechnic Foundation Programme (PFP)?

- **One-year** Foundation Programme that prepares well-performing Sec 4N(A) students for progression into respective polytechnic diploma courses.
- **Alternative** to Sec 5
- Students must **pass all PFP modules** to progress to their respective diploma courses.
- Offered by all **5 Polys**

PFP Courses



Courses

For eligibility criteria of the polytechnic diploma courses# offered under Polytechnic Foundation Programme, [Click here for more information](#)
Before you make an application, please check out the medical requirements (e.g. colour vision, hearing, etc) of the courses offered by the

Course Group

- GROUP 1
- GROUP 2

Course Category

- Applied Sciences
- Built Environment
- Business & Management
- Engineering
- Health Sciences
- Humanities
- Information & Digital Technologies
- Maritime Studies
- Media & Design

Polytechnic

↕ Poly	↕ Course Code	↕ Course Name	↕ Course Group	↕ Course Category
NYP	C33	Animation & Visual Effects	GROUP 1	Media & Design
TP	T20	Apparel Design & Merchandising	GROUP 1	Media & Design
RP	R25	Arts & Theatre Management	GROUP 2	Media & Design
NP	N88	Chinese Media & Communication	GROUP 2	Media & Design
TP	T59	Communication Design	GROUP 1	Media & Design
NP	N12	Design	GROUP 1	Media & Design
RP	R36	Design for User Experience	GROUP 1	Media & Design
SP	S35	Digital Animation	GROUP 1	Media & Design

For more info, go to

https://pfp.polytechnic.edu.sg/PFP/pfp_courses.html

PFP Criteria:

- Raw ELMAB3 ≤ 12 (excluding CCA bonus pts)
- ELMAB3: EL, MA and Best 3 Subjects

Group 1 (Science/Engineering/ICT/Design etc)	
<u>Subject</u>	<u>Minimum Grade</u>
EL Syllabus A	3
MA Syllabus A; A MA	3
1 of the following: - D&T - F&N - Sc (Chem + Bio) - Sc (Chem + Phy)	3
2 "Best" subjects	4

Group 2 (Business/Media/Humanities etc)	
<u>Subject</u>	<u>Minimum Grade</u>
EL Syllabus A	2
MA Syllabus A; A MA	3
1 of the following: - Art - E Lit - History - Geography - Combined Humanities - POA	3
2 "Best" subjects	4

Admissions to PFP will be restructured to a cluster-based approach

From AY2026:

- Students will enter one of **three key broad clusters** before being posted to a specific diploma course based on their interest and PFP performance:
 - **Sciences**
 - **Design, Engineering & Technology***
 - **Humanities, Art, Media and Business**
- Students seeking admission to **Nursing and Early Childhood Development & Education** courses will continue to be admitted to these specific diplomas in their PFP, as these courses are more specialized

**NYP and TP will also offer a 'Design sub-cluster' as their design courses are more specialised, while the other polytechnics (NP, RP and SP) will offer design as part of the 'Design, Engineering & Technology cluster'.*

Changes for AY2024 Sec 3 cohort

Prerequisite subjects for different clusters for PFP

Aggregate Type: ELMAB3		
Subjects to choose from		
	Sciences and Design, Engineering & Tech (DET) clusters, including design sub-clusters; and Nursing courses	Humanities, Art, Media and Business (HAMB) cluster; and Early Childhood courses
EL	English Language	
MA	Mathematics	
B1	Design and Technology Food and Nutrition/Nutrition and Food Science Science (Chemistry, Biology) Science (Physics, Biology) Science (Physics, Chemistry)	Art Geography History Humanities (Social Studies, Geography) Humanities (Social Studies, History) Humanities (Social Studies, Literature in English) Literature in English Principles of Accounts
B2	Any two other subjects	
B3		

PFP Application

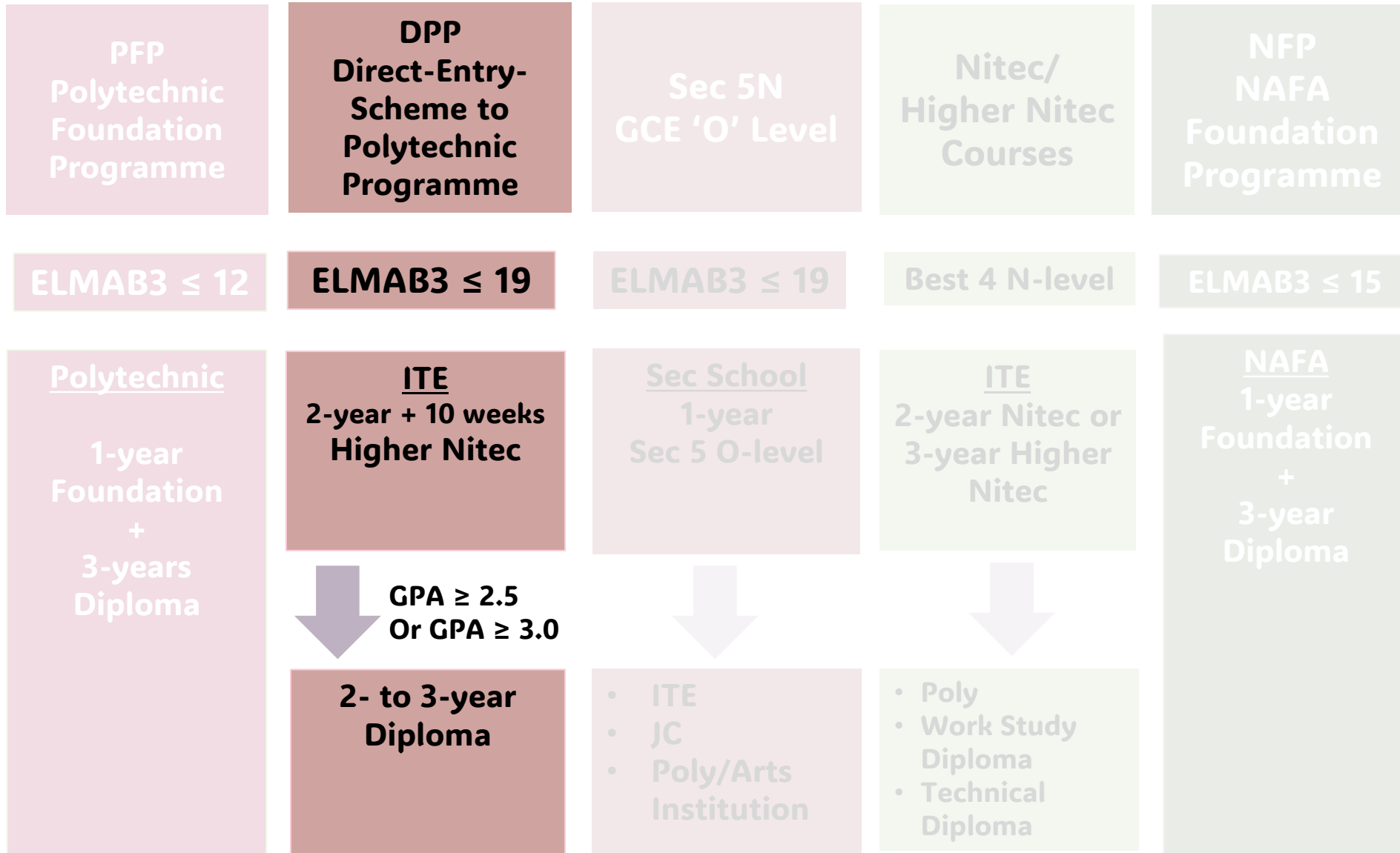
When?

- Jan (upon release of O Level results)

How many course choices?

- Up to **5** PFP choice choices
- Eligibility **does not** guarantee placement in a PFP course
- Dependent on vacancies and open competition with other applicants **based on merit**

Education Pathways for N(A) students

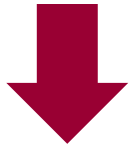


What is DPP?

- Prepares 4N(A) students for **progression into selected polytechnic diploma courses** via a **two-year Higher Nitec** programme at the ITE.
- **An alternative** to Sec 5.
- Students are **guaranteed** a place in the Polytechnic so long as they meet the requirements.

How does DPP work?

ELMAB3 \leq 19



**2-year
Higher
Nitec in ITE**

Includes 10-week
prep course



**Achieving
minimum
qualifying
Higher Nitec
GPA**



**Assured of a
place in a
mapped
Polytechnic
course**

- Business & Services: ITE raw **GPA \geq 3.0** points
- Applied Sciences: ITE raw **GPA \geq 2.5 points**
- Engineering and Infocomm Tech: ITE raw **GPA \geq 2.5 points**

If in Engineering / Infocomm Tech and your ITE **GPA $>$ 3.5 points**,
you can go to **Poly 2nd year**

DPP: 18 Higher Nitec Courses offered

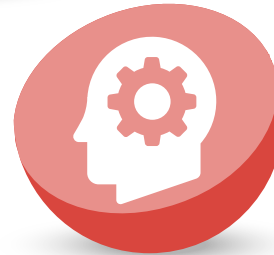
BUSINESS & SERVICES

Accounting
Event Management
Financial Services
Hospitality Operations
International Logistics
Leisure & Travel Ops
Service Management



APPLIED SCIENCES

Chemical Technology



ENGINEERING

Civil Structural & Eng Design
Electrical Engineering
Electronics Engineering
Mechanical Engineering
Mechatronics Engineering

INFO-COMMUNICATIONS TECH

Business Information Systems
Cyber & Network Security
Games Art & Design
IT Applications Development
IT Systems & Networks



DPP Mapping to Polytechnic

2-Year Higher Nitec DPP Course ^[2]	Mapped Polytechnic Courses for Articulation from 2-Year Higher Nitec DPP Course	Offered by	Minimum Qualifying GPA ^[3]	
			Year 1 Entry ^[4]	Year 2 Entry ^[5]
Electrical Engineering	Automation & Mechatronic Systems	NP	2.5	-
	Biomedical Engineering	NP	2.5	-
	Biomedical Engineering	NYP	2.5	-
	Biomedical Engineering	TP	2.5	-
	Common Engineering Programme	NP	2.5	-
	Common Engineering Programme	NYP	2.5	-
	Common Engineering Programme	RP	2.5	-
	Common Engineering Programme	SP	2.5	-
	Common Engineering Programme	TP	2.5	-
	Computer Engineering	SP	2.5	3.5
	Computer Engineering	TP	2.5	-
	Electrical & Electronic Engineering	RP	2.5	3.5
	Electrical & Electronic Engineering	SP	2.5	3.5
	Electrical Engineering	NP	2.5	3.5
	Electronic & Computer Engineering	NP	2.5	3.5
	Electronic & Computer Engineering	NYP	2.5	3.5
	Electronics	TP	2.5	3.5
	Engineering Design with Business	RP	2.5	-
	Engineering with Business	NYP	2.5	-
	Experiential Product & Interior Design	NYP	2.5	-
	Integrated Facility Management	TP	2.5	-
	Marine & Offshore Technology	NP	2.5	-
	Mechanical Engineering	NP	2.5	-
	Mechatronics	TP	2.5	-
	Nanotechnology & Materials Science	NYP	2.5	-
	Robotics & Mechatronics	NYP	2.5	-
	Sustainable Built Environment	RP	2.5	-

EXAMPLE

DPP Mapping to Polytechnic

Higher Nitec DPP Course ^[2]	Mapped Polytechnic Courses for articulation from Higher Nitec DPP Course	Offered by	Minimum Qualifying GPA ^[3]	
			Year 1 Entry ^[4]	Year 2 Entry ^[5]
Business & Services				
International Logistics	Logistics & Operations Management	TP	3.0	-
	Marketing	TP	3.0	-
Service Management	Business Studies	NP	3.0	-
	Common Business Programme	NP	3.0	-
	International Trade & Business	NP	3.0	-
	Tourism & Resort Management	NP	3.0	-
	Accountancy & Finance	NYP	3.0	-
	Banking & Finance	NYP	3.0	-
	Business Management	NYP	3.0	-
	Common Business Programme	NYP	3.0	-
	Experiential Product & Interior Design	NYP	3.0	-
	Food & Beverage Business	NYP	3.0	-
	Hospitality & Tourism Management	NYP	3.0	-
	Mass Media Management	NYP	3.0	-
	Sport & Wellness Management	NYP	3.0	-
	Business (<i>course merger of Sport Management and Business & Social Enterprise and Sports & Leisure Management</i>)	RP	3.0	-
	Customer Experience Management with Business	RP	3.0	-
	Industrial & Operations Management	RP	3.0	-
	Integrated Events Management	RP	3.0	-
	Restaurant Culinary Operations	RP	3.0	-
	Business Administration	SP	3.0	-
	Business	TP	3.0	-
	Common Business Programme	TP	3.0	-
	Culinary & Catering Management	TP	3.0	-
	Hospitality & Tourism Management	TP	3.0	-
	Logistics & Operations Management	TP	3.0	-
	Marketing	TP	3.0	-
NP: Ngee Ann Polytechnic SP: Singapore Polytechnic		NYP: Nanyang Polytechnic TP: Temasek Polytechnic		RP: Republic Polytechnic

Eligibility for DPP

- **Raw ELMAB3** (English, Math, Best 3 Subjects) ≤ 19
- Meet the Minimum Entry Requirements (MERs)



ELMAB3 (EL, MA and Best of 3 Subjects)	≤ 19 (excluding CCA bonus points)	
English Language	≤ 3 (Business & Services Courses)	≤ 4 (Applied Sciences, Engineering and ICT courses)
Mathematics	≤ 4	
Best Subject 1	≤ 5	
Best Subject 2	≤ 5	
Best Subject 3	≤ 5	

Posting to DPP is based on Merit

- Looking at previous year's cut-off points, an ELMAB3 score of 16 to 19 may not secure a DPP place

2-Year Higher Nitec Courses	Course Code	College Code	2022 JIE 'H' ELMAB3	Entry Requirements
Duration: 2¼ Years (10 weeks of preparatory course followed by 2 years Higher Nitec training)				
APPLIED SCIENCES				
Chemical Technology ②	FPCHT	CE-SM	7	<p>A total of 19 points or less for English Language, Mathematics and 3 other subjects (ELMAB3) in the GCE 'N(A)' examinations</p> <p>For the ELMAB3 aggregate score, you must get:</p> <ul style="list-style-type: none"> Grade 1-4 in English Language Grade 1-4 in Mathematics Grade 1-5 in the 3 other subjects
ENGINEERING				
Civil & Structural Engineering Design ②	FPCSE	CE-SM	10	
Electrical Engineering ①②	FPELE	CE-SM CW-CK	14 14	
Electronics Engineering ①②	FPECE	CC-AM CE-SM CW-CK	13 15 15	
Mechanical Engineering ②	FPMEC	CC-AM CE-SM CW-CK	11 15 14	
Mechatronics Engineering ①②	FPMCE	CC-AM CW-CK	12 13	
INFO-COMMUNICATIONS TECHNOLOGY				
Business Information Systems ②	FPBIS	CE-SM	10	
Cyber & Network Security ②	FPNST	CC-AM CE-SM CW-CK	8 11 10	
Immersive Applications & Game ② <i>(previously known as Games Art & Design)</i>	FPIAG	CC-AM	9	
IT Applications Development ②	FPIAD	CC-AM CE-SM CW-CK	9 11 10	
IT Systems & Networks ②	FPISN	CC-AM CE-SM CW-CK	9 11 11	
BUSINESS & SERVICES				
Accounting ②	FPACC	CC-AM CE-SM CW-CK	9 11 11	<p>A total of 19 points or less for English Language, Mathematics and 3 other subjects (ELMAB3) in the GCE 'N(A)' examinations</p> <p>For the ELMAB3 aggregate score, you must get:</p> <ul style="list-style-type: none"> Grade 1-3 in English Language Grade 1-4 in Mathematics Grade 1-5 in the 3 other subjects
Event Management ②	FPBSE	CC-AM CE-SM	10 11	
Financial Services ②	FPBNS	CC-AM	10	
Hospitality Operations ②	FPHPO	CW-CK	11	
International Logistics ②	FPLIT	CE-SM	11	
Leisure & Travel Operations ②	FPLTO	CW-CK	10	
Service Management ②	FPBSC	CW-CK	11	

DPP Application

When?

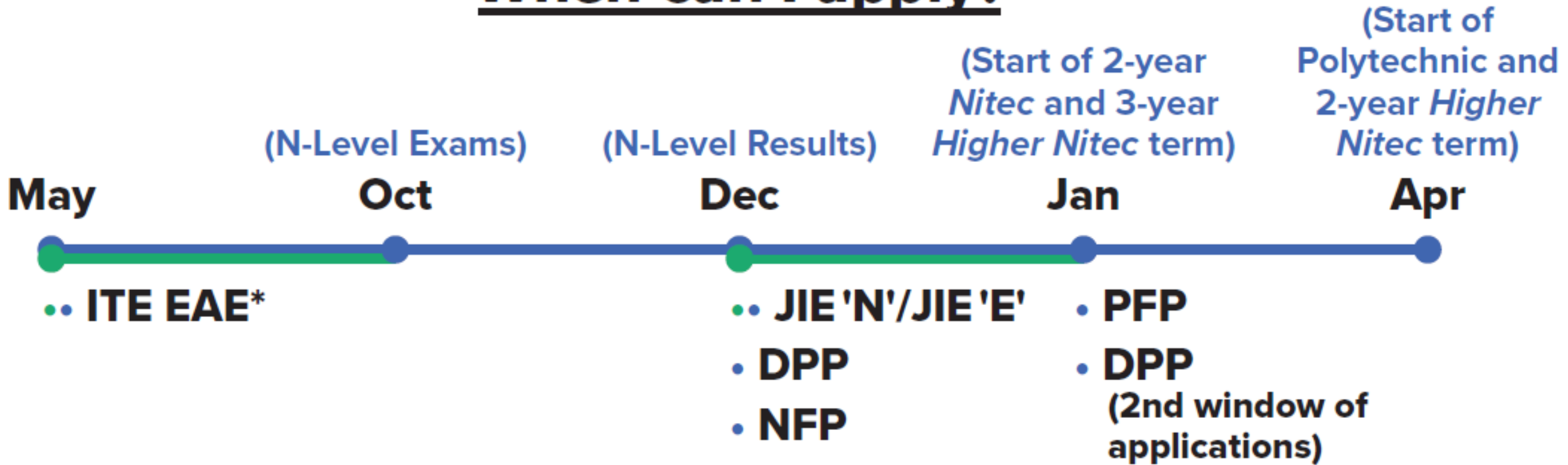
- December** (upon release of N-Level results)
- January** (upon release of O-Level results) for newly eligible students

How many course choices?

- Up to **12** choices
- Eligibility does not guarantee placement in a DPP course

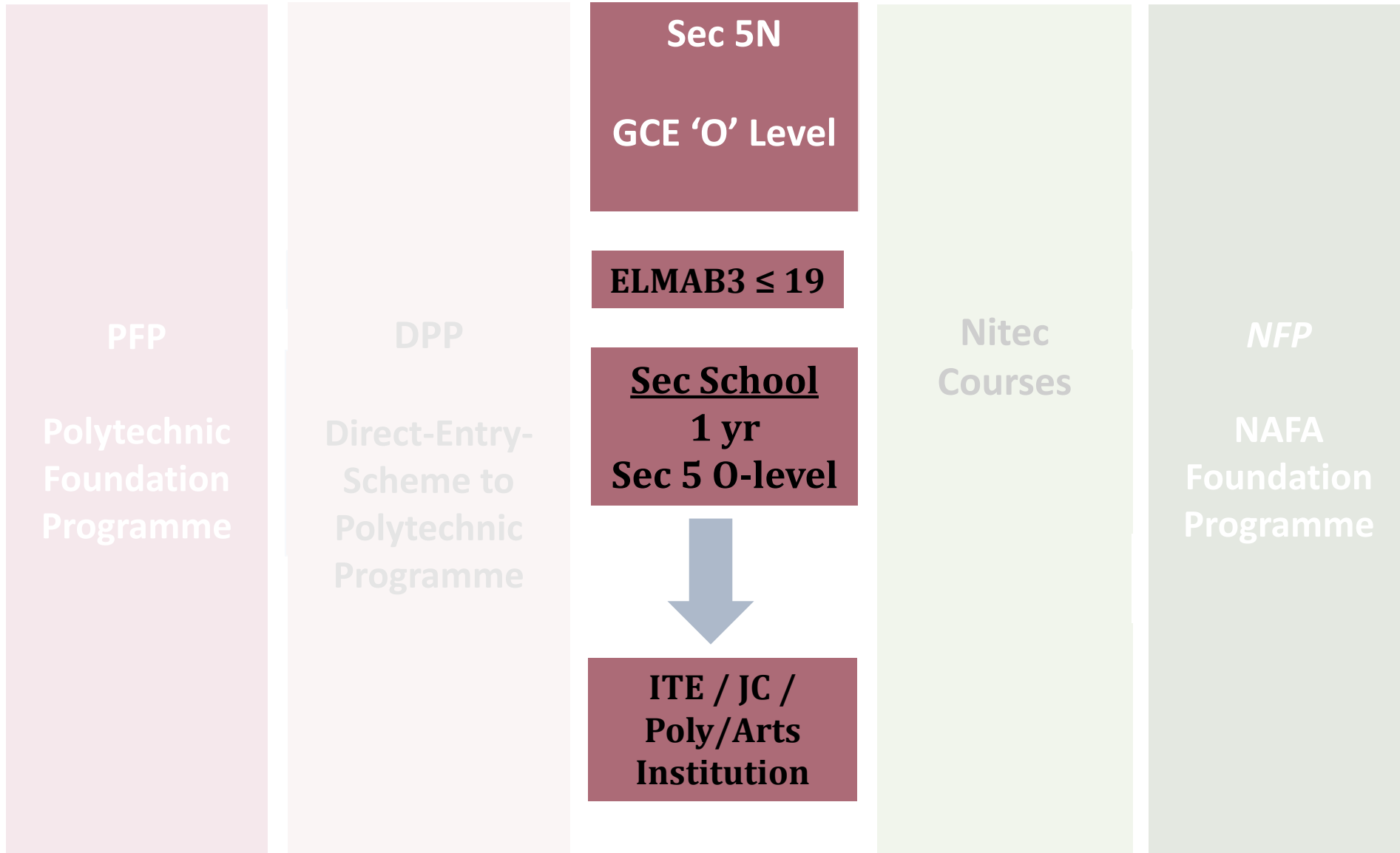
Note: Students can apply for ITE 2-year Nitec and 3-year Higher Nitec courses concurrently.

When can I apply?



Students can **combine** their **GCE 'N'** (Academic) Level results and school-based **'O' Level preliminary examination** results to apply for the DPP (1st window/Dec).

Education Pathways for N(A) students



Progressing to Sec 5/GCE O-Level exams

- After O-Level exam, students can apply for admission to Junior Colleges, Millennia Institute, Polytechnics and ITE under the Joint Admissions Exercise (JAE).
- Sec 5 students are also eligible for Poly Early Admissions Exercise (**EAE**)

CONSIDERATIONS:

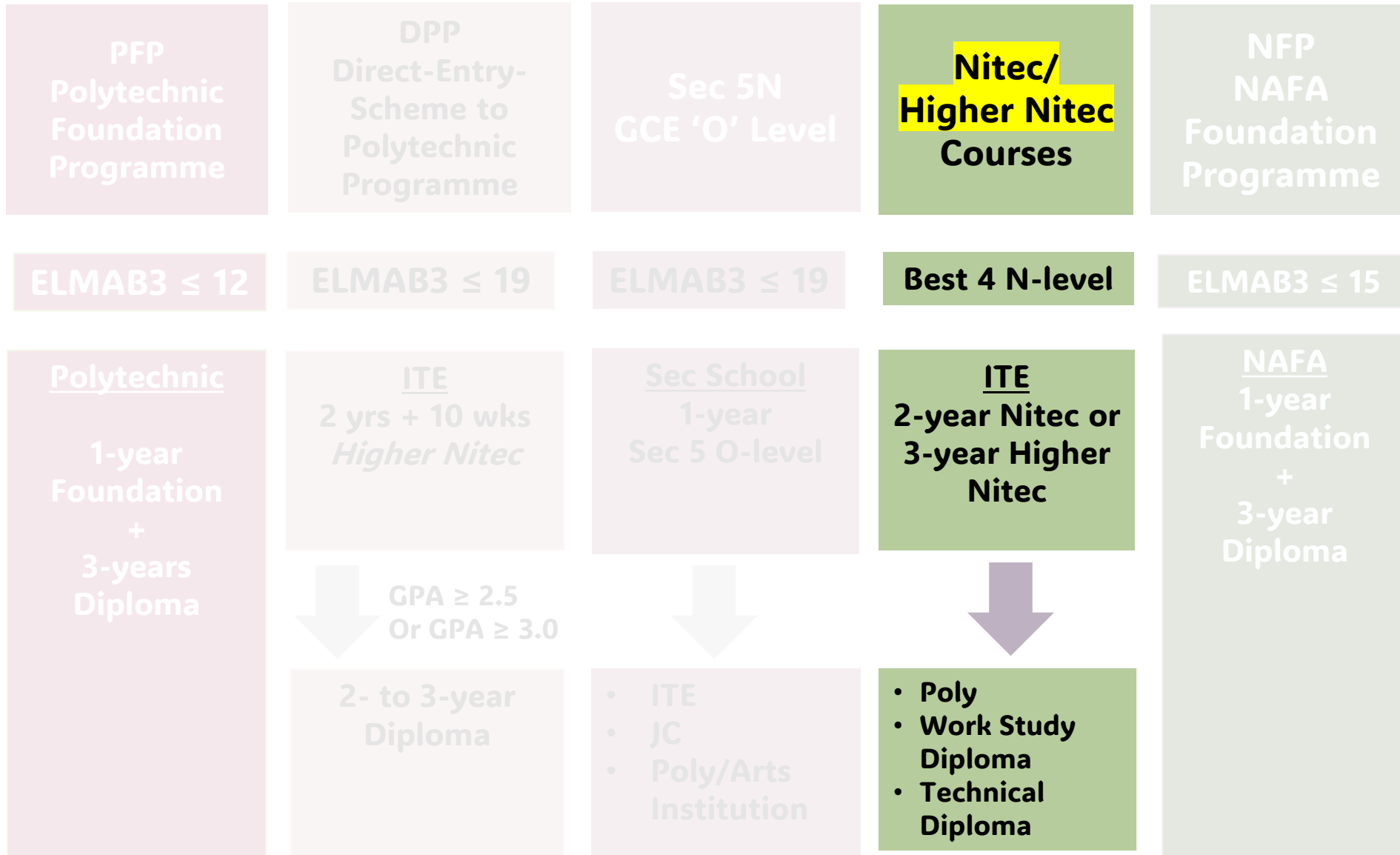
- Think about your **learning ability, preferred learning styles, interests, strengths and passions.**
- From N(A) to O-Level syllabus – how will you manage this?

Sec 5: Eligibility criteria

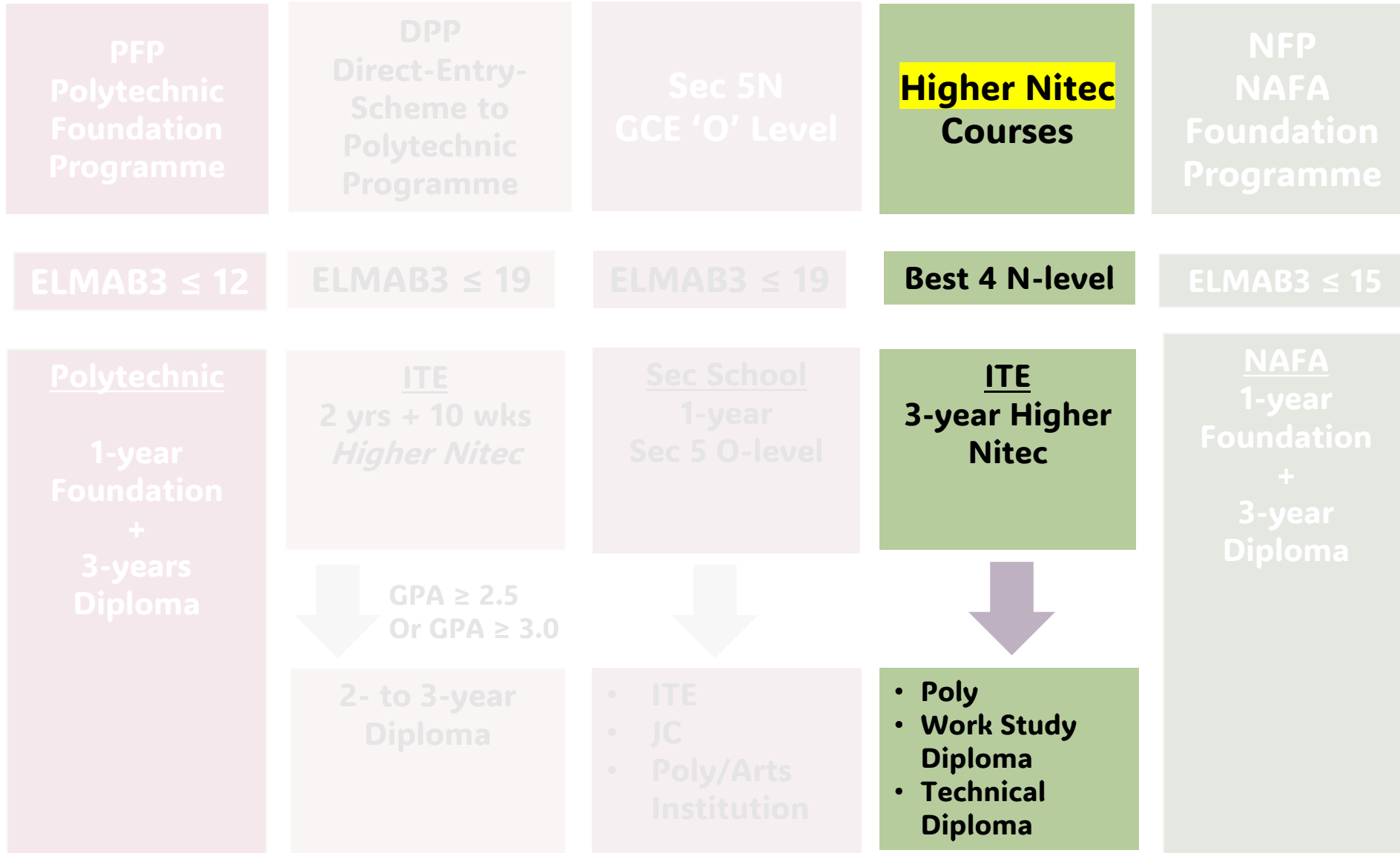


- Obtained an **ELMAB3 \leq 19 points** (excluding CCA bonus points)
- Obtained at least a **Grade 5** for all subjects used in **ELMAB3** computation

Education Pathways for N(A) students

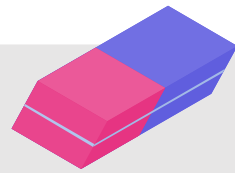


Education Pathways for N(A) students

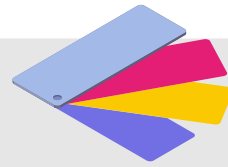


ITE: 6 Academic Schools

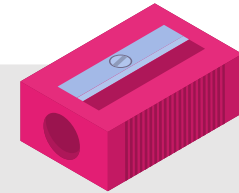
~ 50 Full-Time Nitec/Higher Nitec Programmes



School of
Applied & Health
Sciences



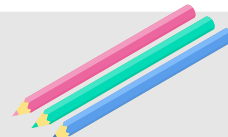
School of
Business &
Services



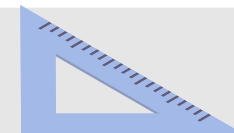
School of
Design &
Media



School of
Electronics & Info-
comm Technology



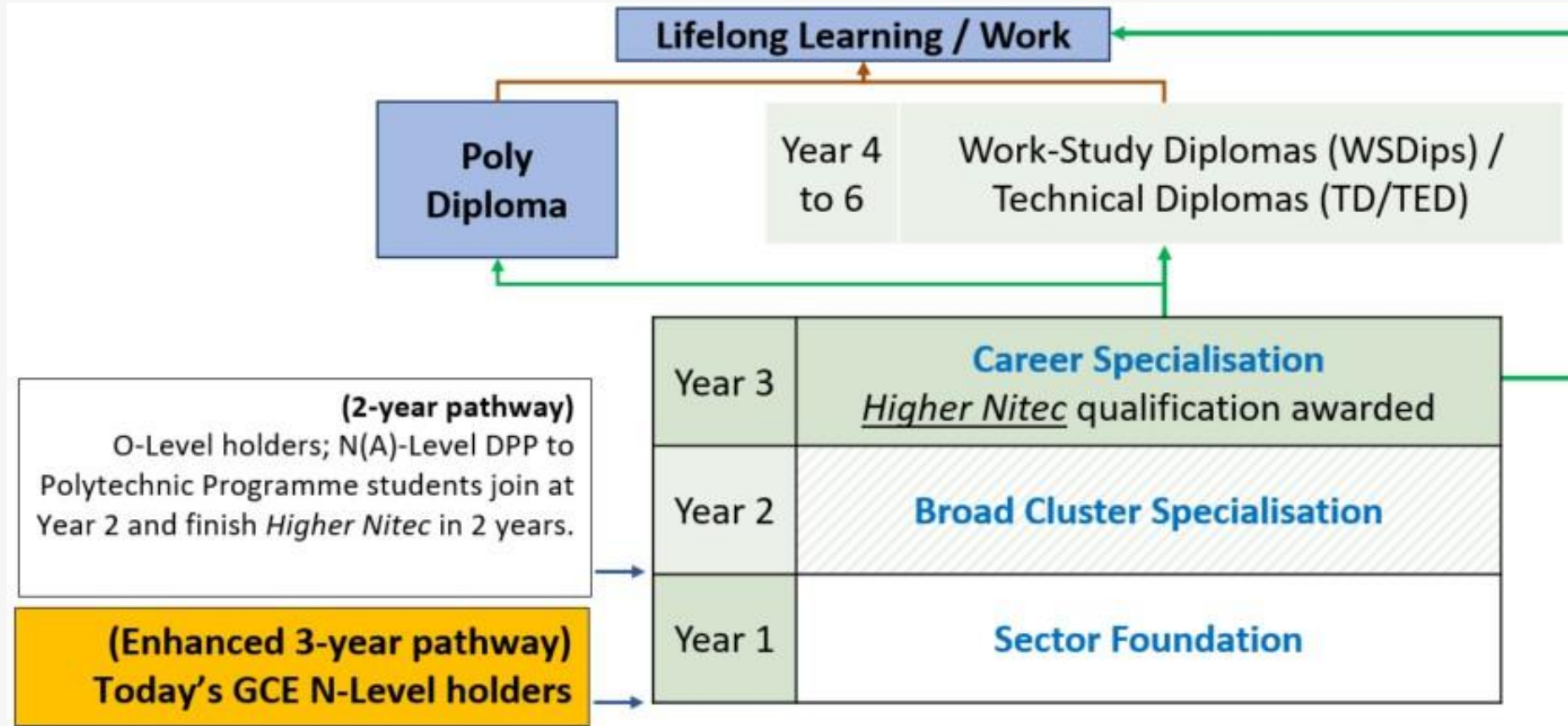
School of
Engineering



School of
Hospitality

3-year Higher Nitec

- Graduate with a Higher Nitec in 3 years
- Gain **deeper industry skills** (3-month Industry Attachment [IA] in Year 2, and 6-month IA in Year 3)
- Get a stronger foundation for further education and skills education and skills upgrading



Poly progression for Higher Nitec graduates

Progression for Higher Nitec graduates

1. Poly admission will be **guaranteed** to all **Higher NITEC** students with a **minimum raw GPA of 3.5**.
 - Top 10% (~1,000) of Higher NITEC graduates across all courses will be guaranteed a place in a polytechnic diploma mapped to their ITE course.
 - Those who wish to progress to an unmapped course can seek admission through the Early Admissions Exercise.
2. Poly eligibility criteria: **net 2.5 GPA**
 - ITE graduates can choose to pursue the Work-Study Diplomas (WSDips) or Technical Diplomas (TDs) pathways, which offer hands-on, apprenticeship-based training.

Work-Study Diploma @ITE

- The ITE Work-Study Diploma (WSDip) programme offers ITE graduates an **opportunity to jumpstart their careers** while working towards a nationally recognised diploma.
- WSDip Trainees will acquire invaluable hands-on experience through **On-the-Job Training with industry experts.**
- As a full-time employee of a WSDip partner company, students can expect a stable income, employee benefits, full-course fee sponsorship, and a well-defined career path.
- WSDip courses are crafted to accommodate the schedules of full-time employees, allowing work-study balance.

Why choose the Work-Study Diploma?

1

You get a fully sponsored and nationally recognised Diploma

3

You earn a monthly salary and enjoy employee benefits

5

You get a headstart by obtaining valuable work experience and on the job training from experts and practitioners

2

You have more opportunities for career advancement, skills upgrading and further education

4

In-service employees can also join the work and learn programme

6

You get sign-on incentive of \$5,000*

Technical Diplomas @ITE

- ITE offers full-time Technical Diplomas to Nitec and Higher Nitec graduates, in collaboration with institutions in France, Germany, Hong Kong and Switzerland.
- Opportunities for student exchanges and industrial attachments at these overseas institutions.



Technical Diploma in
Beauty & Wellness
Management



Technical Diploma in
Hospitality & Hotel
Management

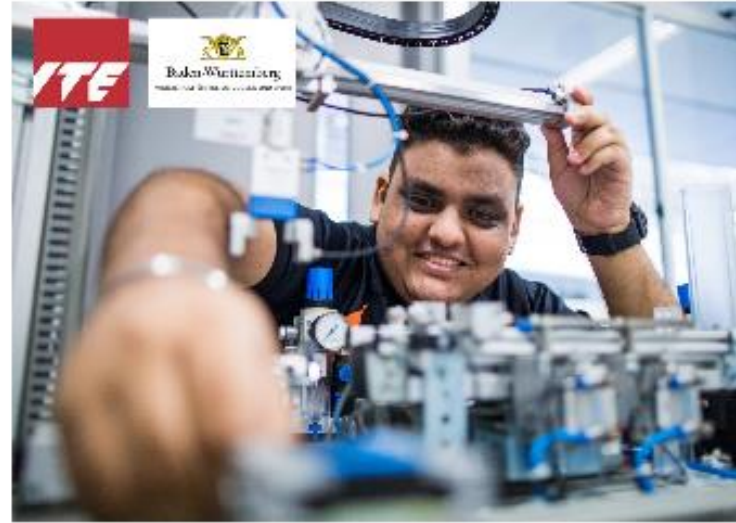


Technical Engineer
Diploma in Civil &
Structural Engineering

Technical Diplomas @ITE



Technical Diploma in
Culinary Arts with
Restaurant Management



Technical Engineer
Diploma in Machine
Technology

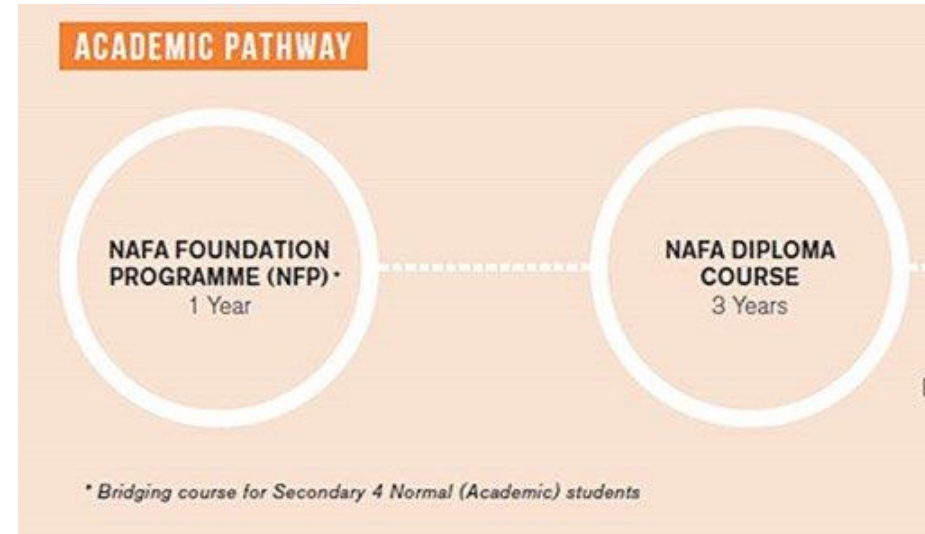


Technical Engineer
Diploma in Automotive
Engineering

Education Pathways for N(A) students



NAFA Foundation Programme (NFP)



- A one-year foundation course where Sec 4NA graduates can apply and be admitted directly to NAFA.
- Successful applicants will be given a **conditional offer of admission** to the diploma courses.
- Upon the successful completion of the NFP, students will be offered a place in their chosen diploma course.

NFP: Entry Requirements



- Raw Score **ELMAB3 \leq 15 points**
- **English \geq 4** will be required to attend an interview.
- Arts-related diplomas may require testimonials, aptitude tests and portfolios
- Provisional place in diploma programme, subject to **passing the foundation year**

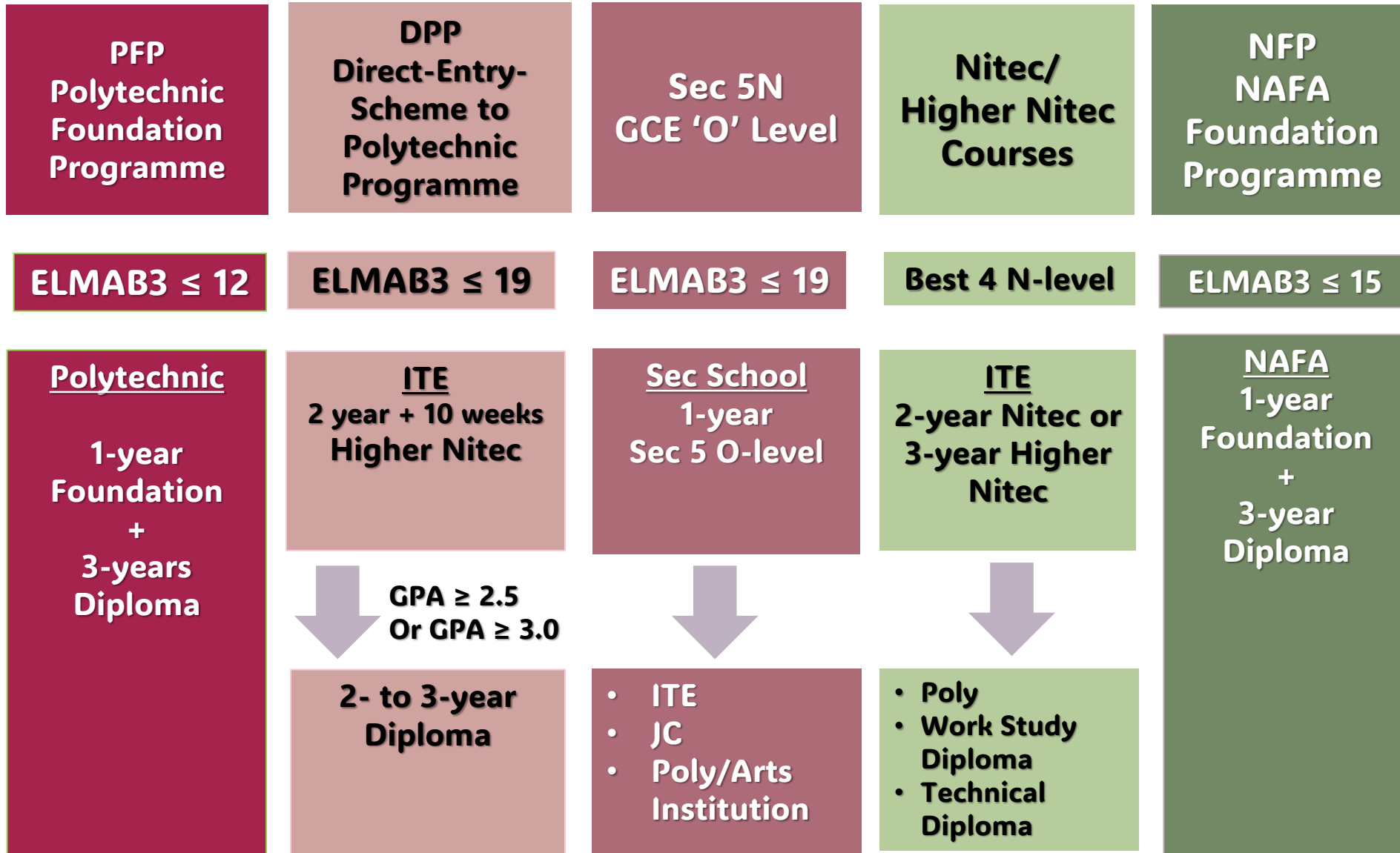
When to apply?

- December (upon release of N Level results)

Diploma Courses in NAFA

Programmes	Course
School of Art & Design	
3D Design	Diploma in Design (Furniture and Spatial)
	Diploma in Design (Interior and Exhibition)
	Diploma in Design (Landscape and Architecture)
	Diploma in Design (Object and Jewellery)
Design and Media	Diploma in Advertising
	Diploma in Graphic Communication
	Diploma in Illustration Design With Animation
	Diploma in Screen Media
Fashion Studies	Diploma in Fashion Design
	Diploma in Fashion Merchandising and Marketing
Fine Art	Diploma in Fine Art
	Diploma in Art Teaching
School of Arts Management, Dance & Theatre	
Arts Management	Diploma in Arts Management
Dance	Diploma in Dance
Theatre	Diploma in Theatre (English Drama)
	Diploma in Theatre (Mandarin Drama)
School of Music	
Music	Diploma in Music
	Diploma in Music Teaching

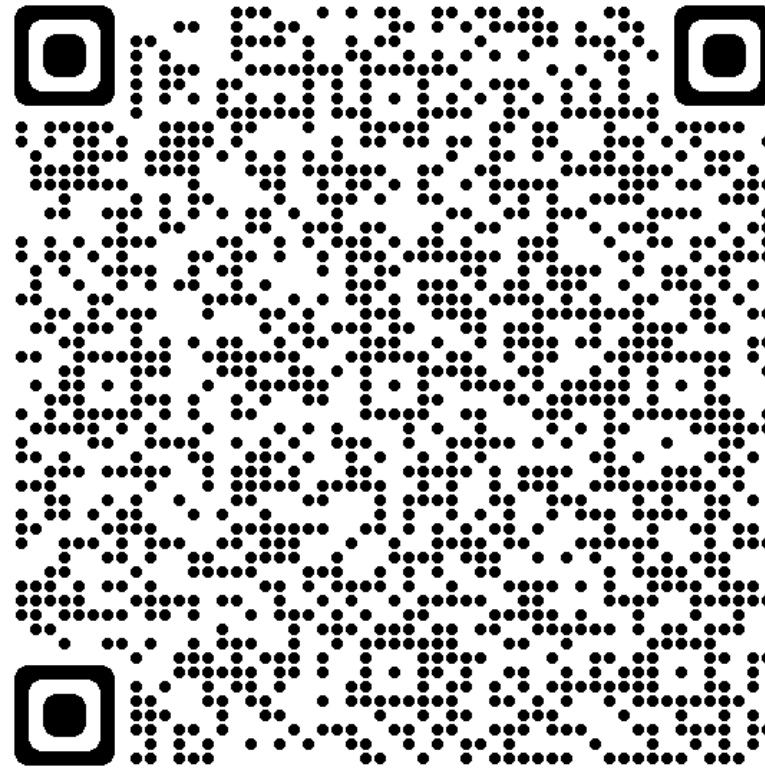
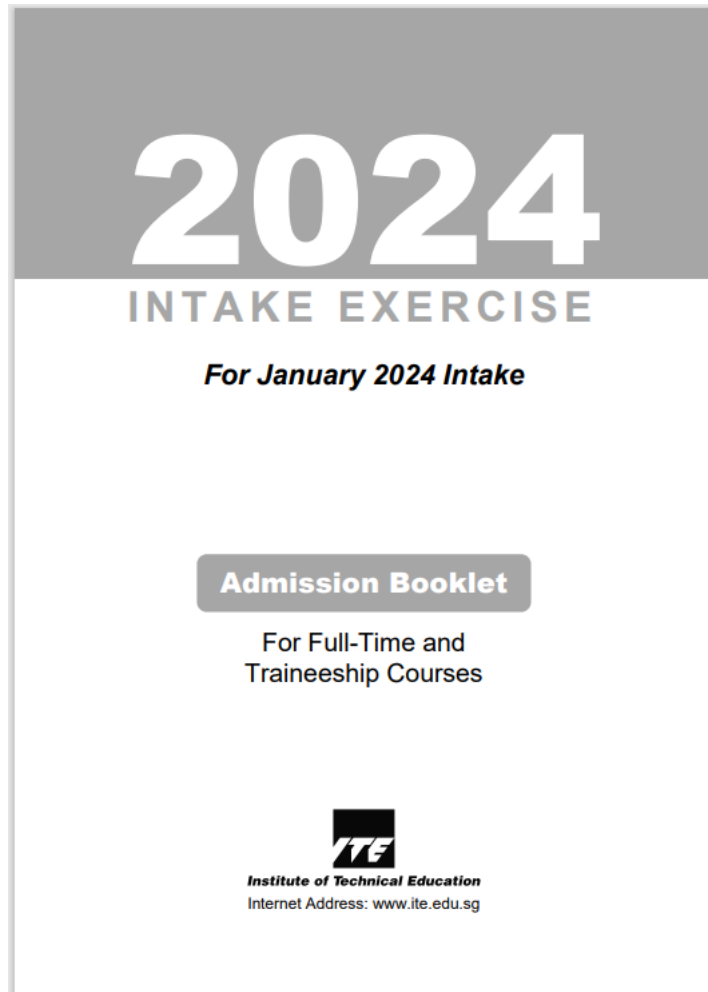
Education Pathways for N(A) students



Calculating ELMAB3 for PFP, DPP & NFP

GCE O Level Grade	NA Grade
A1 – B3	1
B4 – C6	2
D7	3
E8	4

Useful Resources



<https://go.gov.sg/thejiebooklet>

Useful resources

CourseFinder

- Explore courses based on aggregate type, score, type of institute and area of interest



<https://go.gov.sg/moe-coursefinder>

A Guide to Post-Secondary Admission Exercises



<https://go.gov.sg/a-guide-to-post-secondary-exercise>

Useful Resources

MySF Know Yourself Profiling Tools



<https://go.gov.sg/mysfsec>

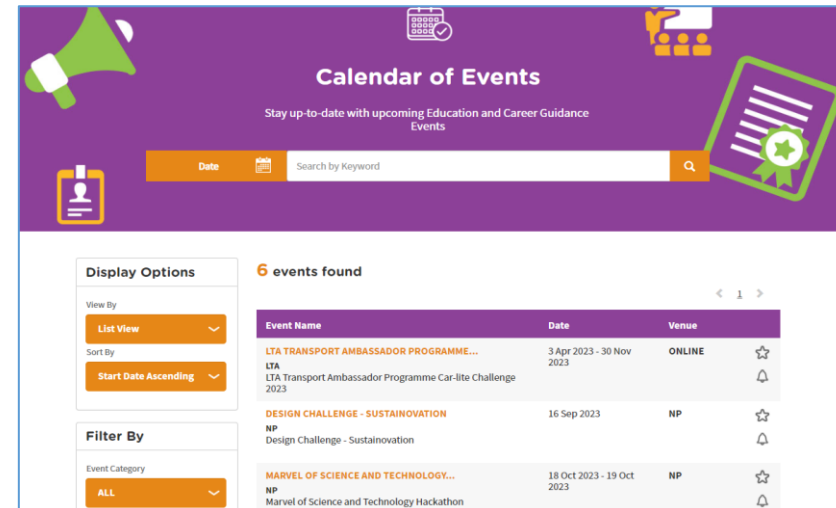


<https://go.gov.sg/mysf1>

MySF Singapore Industry Landscape



MySF Calendar of Events



Come and have a chat with...

LAI YI MING (MS)

Education & Career Guidance Counsellor

WHEN: Every Wednesday & Thursday,
8am to 5.30pm

WHERE: Guidance @ Fairfield

E-MAIL: Lai_Yi_Ming@moe.edu.sg
Lai_Yi_Ming@schools.gov.sg

For appointment booking, please scan this
QR code or go to
<http://go.gov.sg/ecgc-book-now>



<https://go.gov.sg/ecgc-book-now>